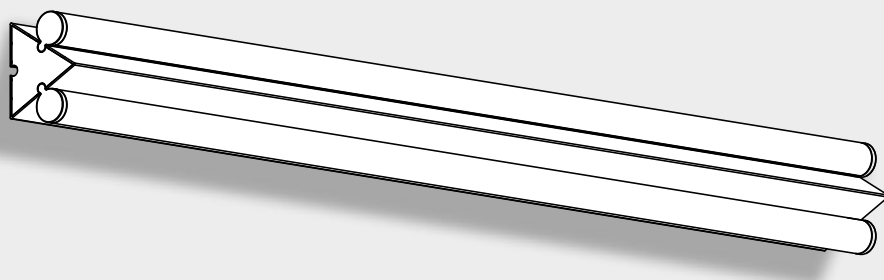
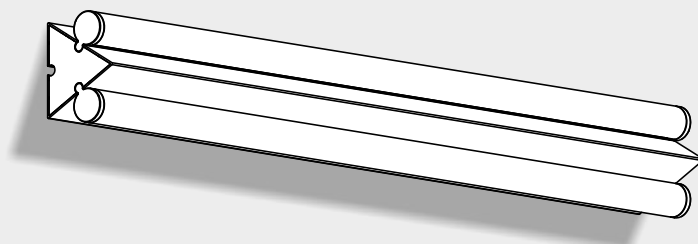


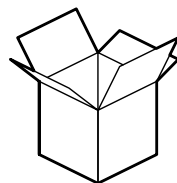
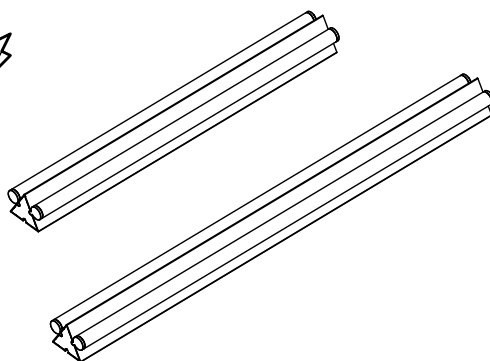
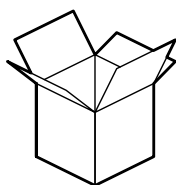
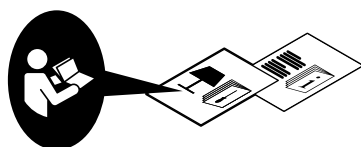
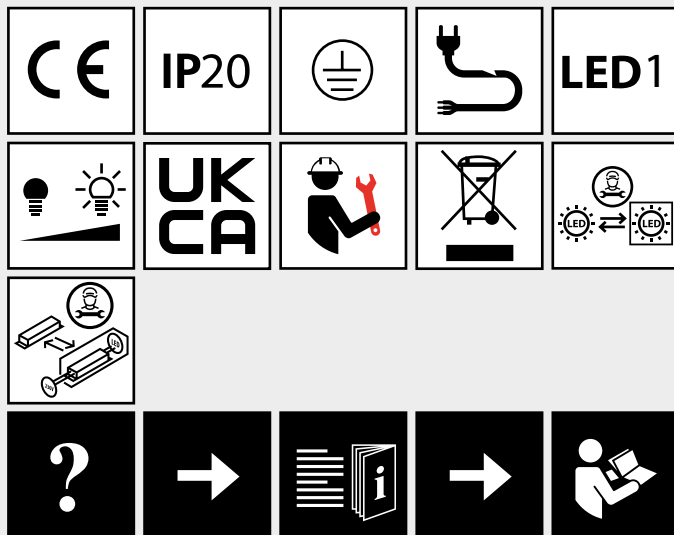
DREISPITZ WALL/CEILING

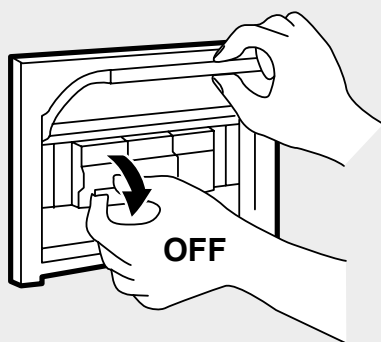
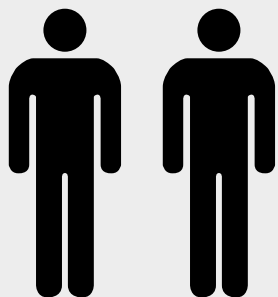
design
Nome Cognome Designer



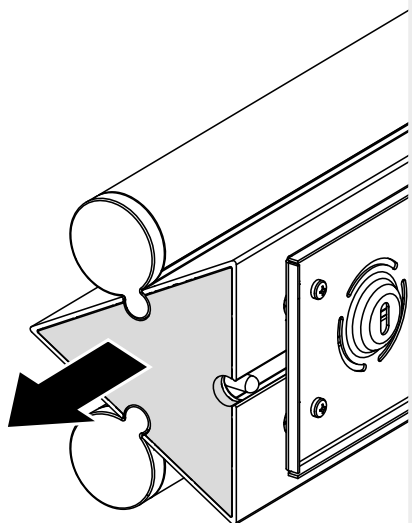


i

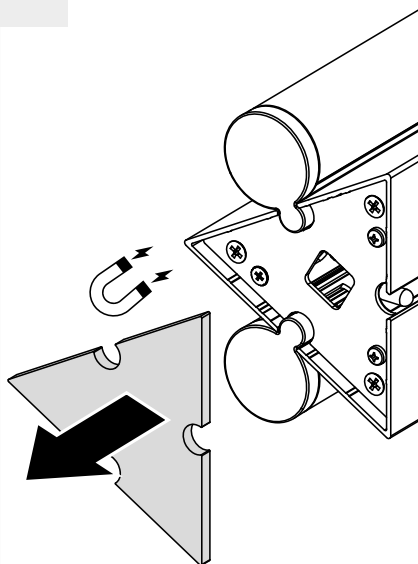




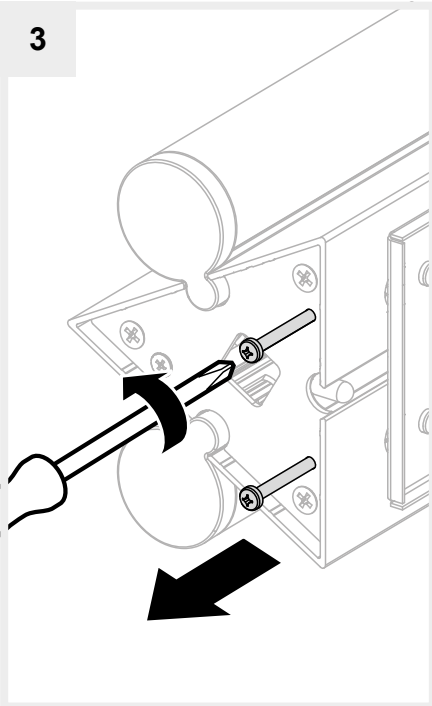
1



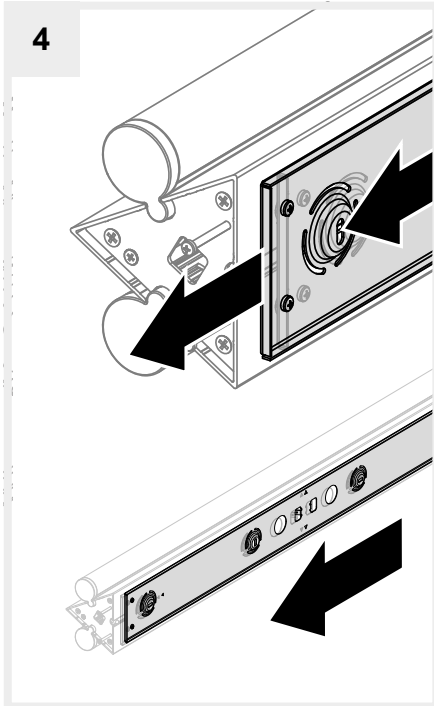
2



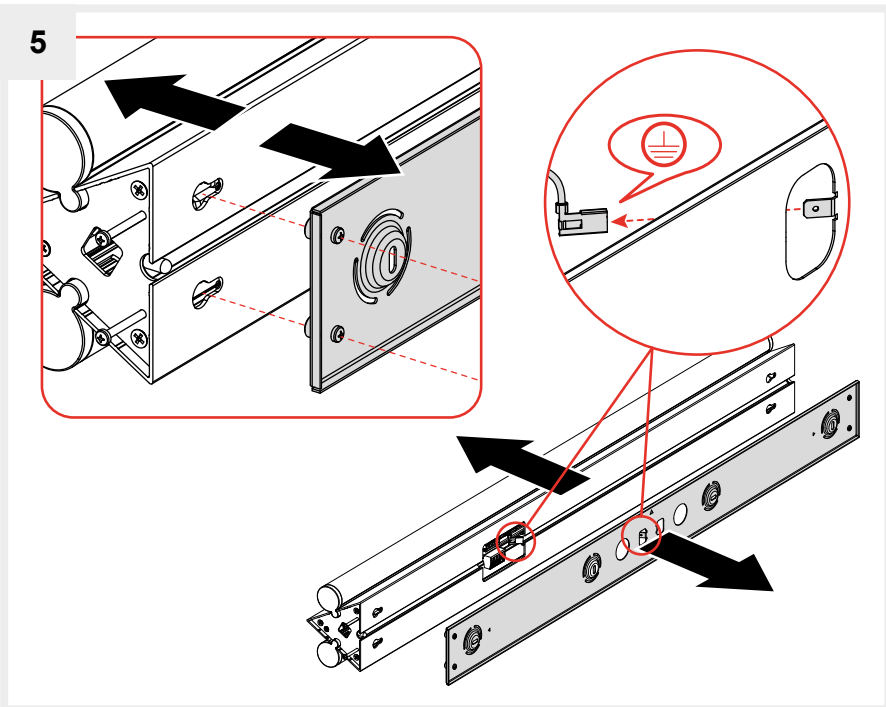
3

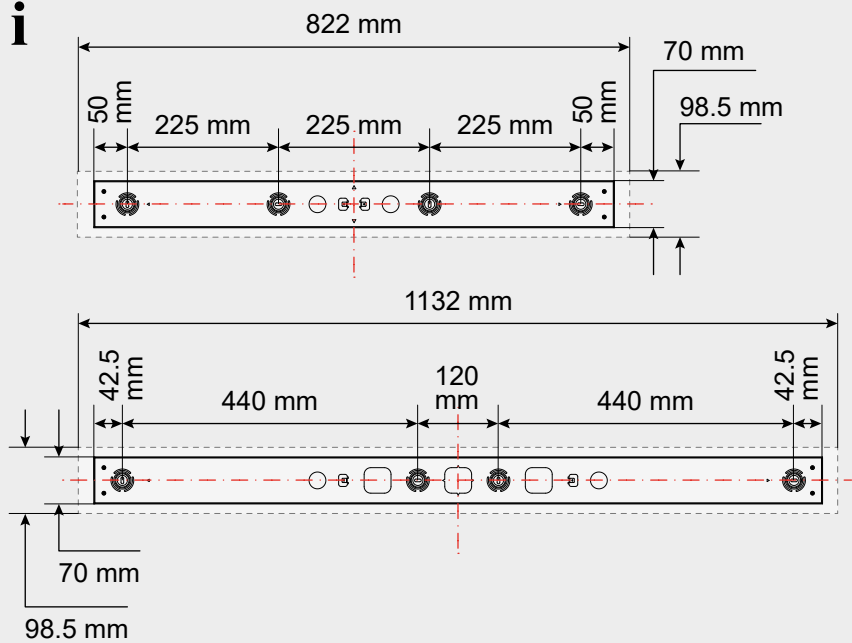
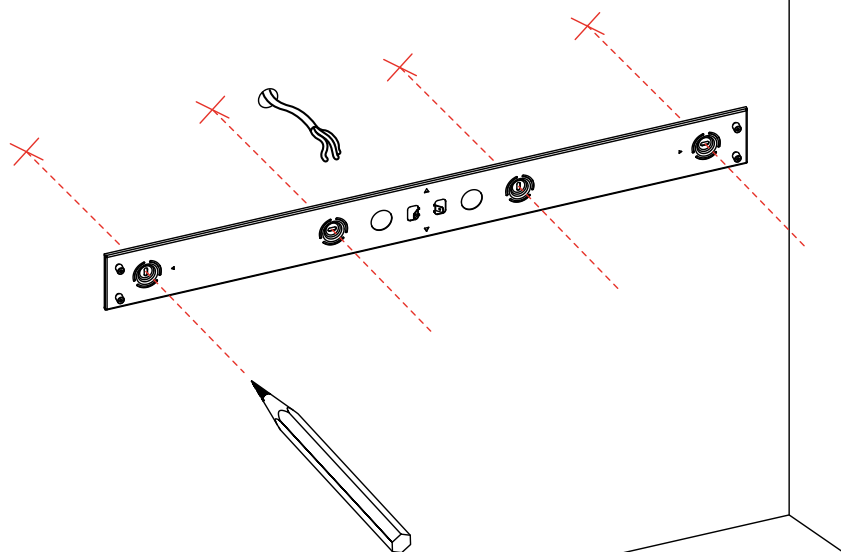


4

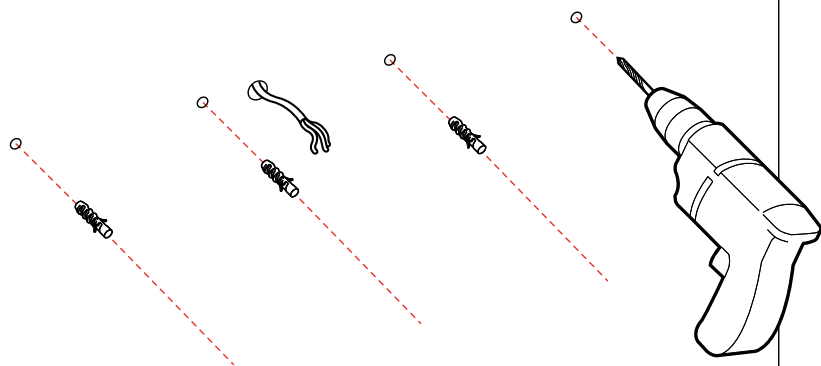


5

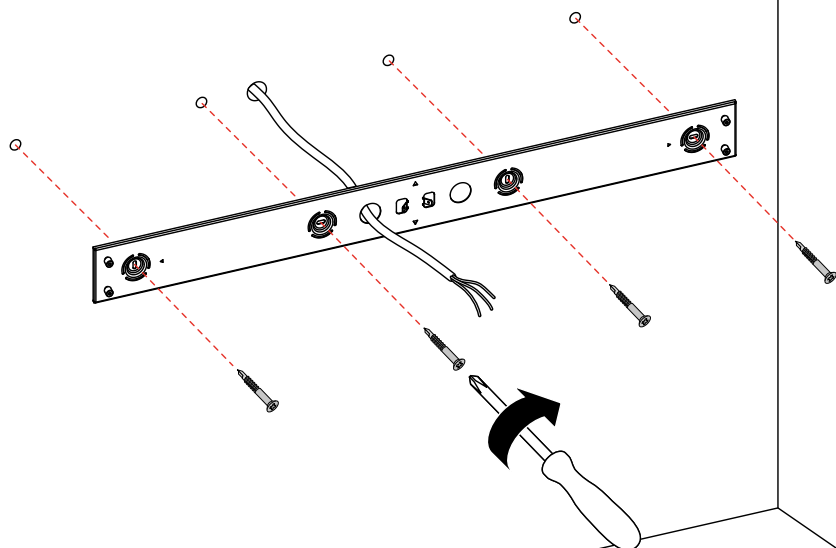


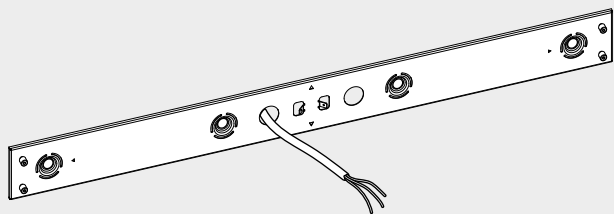
i**6**

7

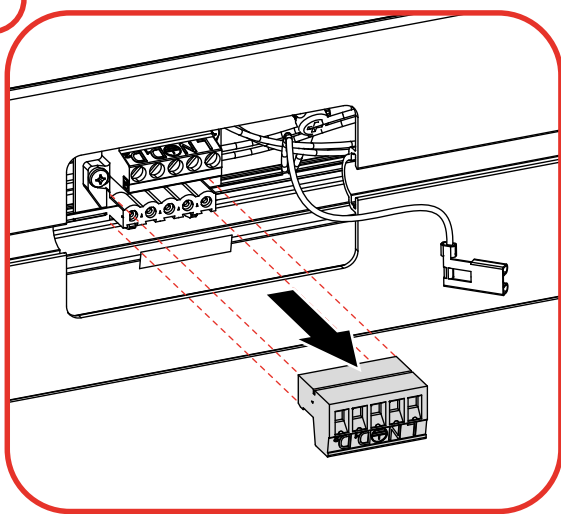
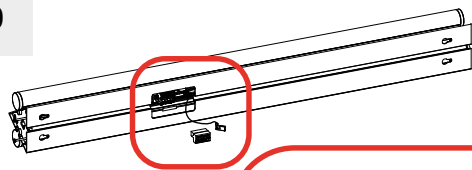


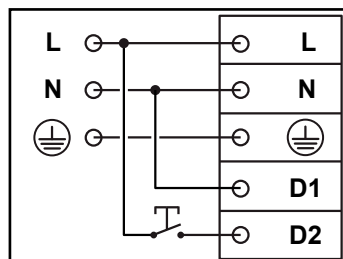
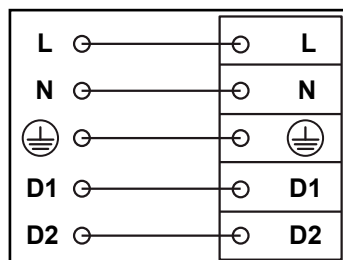
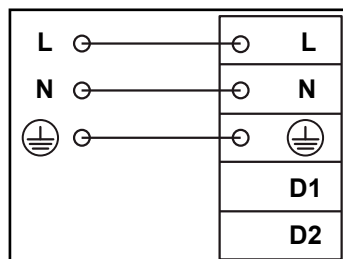
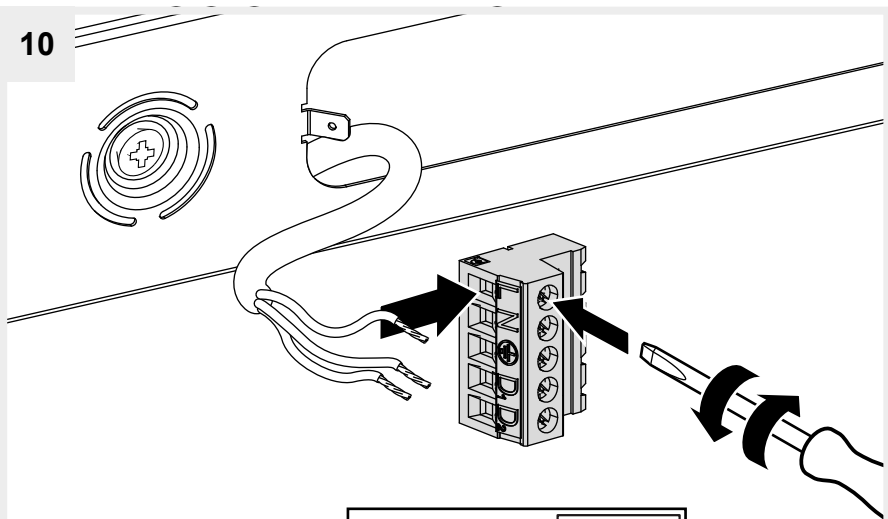
8



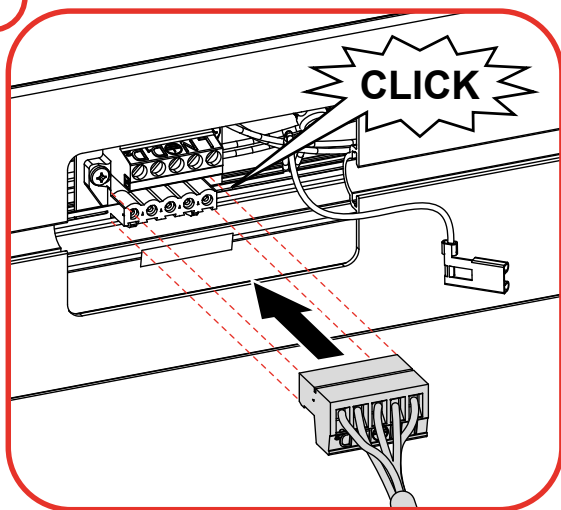
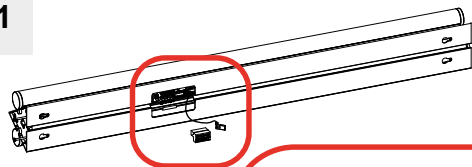


9

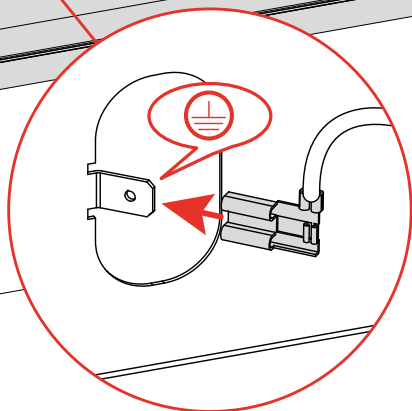
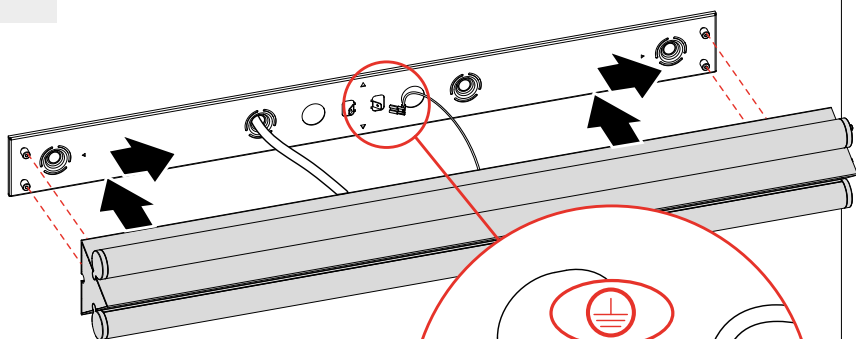




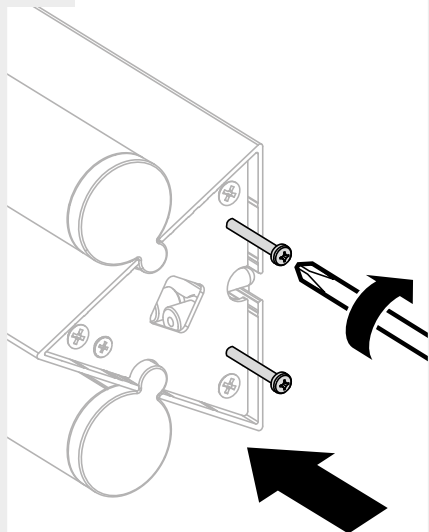
11



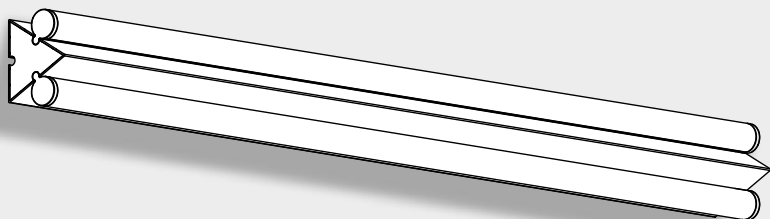
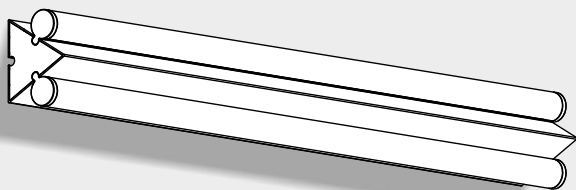
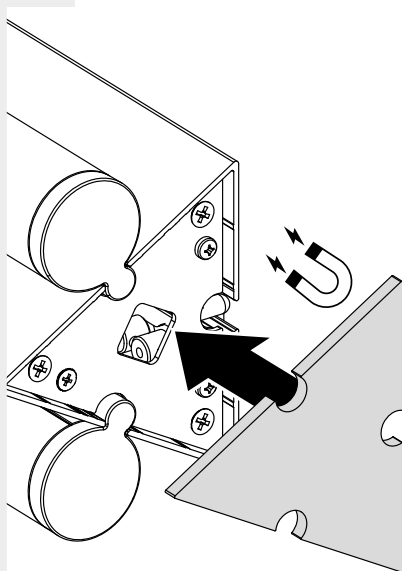
12

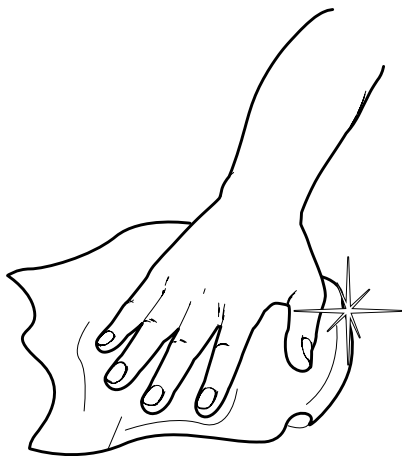
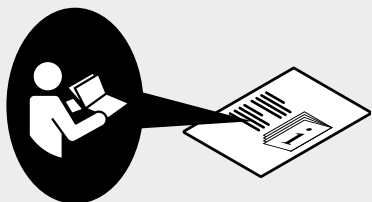


13

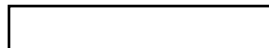


14





Artemide®



Artemide

via Bergamo, 18
20006 Pregnana M.se (MI)
ITALIA

tel. +39 02 935 181
fax +39 02 935 90 254
fax +39 02 935 90 496

www.artemide.com

VAT IT00846890150

cod. Y513002015A